

# AGENDA

**Meeting:** Tidworth Area Board  
**Place:** Wellington Academy, Tidworth Rd, Tidworth, Wiltshire SP11 9RR  
**Date:** Monday 22 January 2018  
**Time:** 7.00 pm

---

Including the Parishes of Chute, Chute Forest, Collingbourne Ducis, Collingbourne, Kingston, Enford, Everleigh, Fittleton, Ludgershall, Netheravon, Tidcombe and Fosbury, and Tidworth.

---

**The Area Board welcomes and invites contributions from members of the public. The chairman will try to ensure that everyone who wishes to speak will have the opportunity to do so.**

If you have any requirements that would make your attendance at the meeting easier, please contact your Democratic Services Officer.

**Refreshments and networking opportunity from 6:30pm**

---

Please direct any enquiries on this Agenda to Kevin Fielding (Democratic Services Officer), direct line 01249 706612 or email [kevin.fielding@wiltshire.gov.uk](mailto:kevin.fielding@wiltshire.gov.uk)

All the papers connected with this meeting are available on the Council's website at [www.wiltshire.gov.uk](http://www.wiltshire.gov.uk)

Press enquiries to Communications on direct lines (01225) 713114 / 713115

---

## Wiltshire Councillors

Cllr Mark Connolly - Tidworth  
Cllr Ian Blair-Pilling - The Collingbournes and Netheravon  
Cllr Christopher Williams - Ludgershall and Perham Down

## **RECORDING AND BROADCASTING NOTIFICATION**

Wiltshire Council may record this meeting for live and/or subsequent broadcast on the Council's website at <http://www.wiltshire.public-i.tv>. At the start of the meeting, the Chairman will confirm if all or part of the meeting is being recorded. The images and sound recordings may also be used for training purposes within the Council.

By entering the meeting room you are consenting to being recorded and to the use of those images and recordings for broadcasting and/or training purposes.

The meeting may also be recorded by the press or members of the public.

Any person or organisation choosing to film, record or broadcast any meeting of the Council, its Cabinet or committees is responsible for any claims or other liability resulting from them so doing and by choosing to film, record or broadcast proceedings they accept that they are required to indemnify the Council, its members and officers in relation to any such claims or liabilities.

Details of the Council's Guidance on the Recording and Webcasting of Meetings is available on request.

	<b>Time</b>
<p>1 <b>Chairman's Welcome, Introductions and Announcements</b> <i>(Pages 1 - 4)</i></p> <p>Chairman's Announcements:</p> <ul style="list-style-type: none"> <li>• Real Change Wiltshire</li> <li>• Army Rebasing</li> </ul>	7:00pm
<p>2 <b>Apologies for Absence</b></p>	
<p>3 <b>Declarations of Interest</b></p> <p>To receive any declarations of disclosable interests or dispensations granted by the Standards Committee</p>	
<p>4 <b>Minutes</b> <i>(Pages 5 - 12)</i></p> <p>To confirm the minutes of the meeting held on Monday 13 November 2017</p>	
<p>5 <b>Police Update</b> <i>(Pages 13 - 20)</i></p>	
<p>6 <b>Office of the Police and Crime Commissioner- Precept Consultation</b> <i>(Pages 21 - 22)</i></p> <p>A short film outlining the Commissioner's Precept Consultation</p>	
<p>7 <b>Fire &amp; Rescue Update</b> <i>(Pages 23 - 26)</i></p>	
<p>8 <b>Homelessness Outreach</b></p> <p>Sarah Johnson</p>	
<p>9 <b>Julia's House</b></p> <p>Jan Burns</p>	
<p>10 <b>Clean Up Wilts</b></p>	

11 **Grant Review - The Mobile Museum**

Ben Welbourne

12 **Thematic Group Updates** *(Pages 27 - 32)*

- Health & Wellbeing Group – Including Grants
- Dementia Action Alliance – Brian Pratt
- Older Person & Carers Champion – Tony Pickernell
- Multi Agency Forum – Marc Read

13 **Community Area Transport Group Update**

Cllr Mark Connolly

14 **Community Engagement Manager Update**

Marc Read

15 **Community Area Grants including Youth Grants** *(Pages 33 - 60)*

To determine any applications for Community Area Grants.

Grant application packs for the Community Area Grants Scheme are available from the Community Area Manager or electronically at:

<http://www.wiltshire.gov.uk/communityandliving/areaboards/areaboardscommunitygrantsscheme.htm>.

16 **Updates from Town & Parish Councils, the Army, NHS, TCAP & other partners** *(Pages 61 - 66)*

17 **Date of next meeting**

- Garrison Theatre, Tidworth – Monday 26 March 2018

18 **Close**

**9:00pm**



# REAL CHANGE WILTSHIRE

The best chance for a homeless person to get off the streets is with professional help from a charity or support organisation.

Making sure help reaches homeless people is far more effective than giving money to people on the street.

If you do want to donate, your small change can make a real change in Wiltshire – and a big difference to charities supporting the homeless.

Find out how you can help – [www.wiltshire.gov.uk/realchangewiltshire](http://www.wiltshire.gov.uk/realchangewiltshire)

To notify the right people about a rough sleeper – [www.streetlink.co.uk](http://www.streetlink.co.uk)

# #realchangewilts





# Army Basing Update for Upavon, Warminster, Tidworth and Amesbury Area Boards - January 2018

## Background

*The government's Army Basing announcement in March 2013 advised of around 4,300 extra Service personnel moving to Wiltshire by the end of the decade. They will be accompanied by their families, bringing the total number of additional people estimated to be moving to the area to 7,600. These plans will require additional levels of infrastructure and services to be provided by Wiltshire Council. The MOD has since reviewed the figures as the relocations draw nearer and now expect the net addition of Service personnel to total 4,000. Accordingly the expected net increase in population will be a little over 7,000.*

**Service Family Accommodation (SFA):** The MOD announced on 26<sup>th</sup> November 2017 that 917 new homes for service personnel and their families will be built across Salisbury Plain. They are to be built by British construction company Lovell, and will offer modern three and four bedroom accommodation, as well as a number of bungalows and adapted homes for families with specific needs, such as wheelchair access. They are expected to complete by May 2020 with sufficient housing provided across Salisbury Plain to accommodate all families relocating from Germany in 2019. They will be built in Bulford, Larkhill and Ludgershall for service personnel and their families relocating from Germany and also units moving within the UK.

Pre-construction work on the project has already begun in the spring of 2017, including off-site highways to facilitate access to the new homes. The £250 million investment comes alongside a further £90 million in road and utility improvements in support of the three developments. £1.1 billion has already been pledged to the Salisbury Plain area for living and working accommodation 'behind the wire' including 2,500 bed spaces for single soldiers and the construction, conversion or refurbishment of nearly 250 other buildings such as offices, garages, workshops and mess facilities.

The programme is expected to create a significant number of jobs in Hampshire and Wiltshire, as well as training opportunities, including apprenticeships, as up to 700 construction workers are set to be on site at the peak of the development.

**St Michael's school build at Larkhill:** Good progress continues for the new school which will cater for 420 pupils plus 60 nursery places. The superstructure (i.e. the structural steel frame and supporting concrete) and the groundworks are complete, so the shape of the building is now evident. The new road to the school is due to be completed in January 2018 by the Defence Infrastructure Organisation. The school build being managed by Wiltshire Council will complete in the summer of 2018, allowing the transfer of the existing school from Figheldean in readiness for the start of the autumn term. School numbers are expected to grow considerably the following year as service families relocate to Wiltshire.

**Other schools:** Planning permission to extend Avon Valley College (AVC) at Durrington was granted, subject to conditions, at the Strategic Planning Committee on 11 October 2017 ([17/05062/DP3](#)). The tender process for AVC will be completed in January 2018, with planning for Ludgershall primary school and Wellington Academy extension underway. Planning applications for these two latter schools are being prepared. All additional places will be available in August 2019, in good time for the arrival of the army units arriving in the summer of 2019.

**Larkhill Roadworks:** There are roadworks in place at Larkhill to complete the surfacing of the approach road from an eastbound direction which connects with the new roundabout on The Packway. Additionally there will be further roadworks to enable completion of a cycle path along the Packway. The roadworks at Larkhill Road (between the A344 roundabout and Bulford Hill) will continue until early 2018. There is also some traffic controls on Fargo Road and Tombs Road to complete sewer connections. Further information will be published via the Larkhill Travel Information Leaflet issued by the ABP. Any queries regarding the roadworks are to be sent to: [DIO-ABPSPTARoadworks@mod.uk](mailto:DIO-ABPSPTARoadworks@mod.uk).

**Distance learning opportunities for Army Spouses:** Wiltshire Council is presently exploring the possibility of enabling an innovative training programme for the spouses of service personnel due to relocate to Wiltshire under the ABP. The “distance learning” will be providing qualifications in jobs that are likely to be hiring staff in the summer of 2019. Wiltshire Council has a good relationship with the major employers in the county and will work in cooperation with them to help fill local vacancies.

**Warminster Army Numbers:** The MOD has indicated that following its A2020 Refine Review, which looked again at long term basing plans, 1 Yorks Unit will move from Warminster to Catterick in 2020 , Royal Dragoon Guards Armoured Cavalry Regt will relocate from Catterick to Warminster in 2020 and RL Medical Armoured Regt will relocate from Catterick to Warminster in 2021. This is likely to lead to an overall increase of around 300 service personnel In Warminster. Wiltshire Council has been in discussion with local schools to plan for additional capacity where it may be needed. It is also reviewing implications for health facilities.

**Wiltshire Assembly:** The Wiltshire Assembly was held on 9 November at County Hall in Trowbridge. It was chaired by John Bush, CVO OBE, KStJ, JP and brings together hundreds of organisations from the public, private and voluntary sectors and Wiltshire’s communities, to decide how to ensure a bright future for the county. This year the assembly had a military theme and included a presentation from the HQSW Brigade based at Tidworth. The presentation highlighted how the military engages with the youth, community and employers as well as demonstrating how successful Wiltshire organisations have been in accessing funds from the Armed Forces Covenant grant scheme.

The assembly showcased the strong civilian and military links that exist throughout Wiltshire and the widespread support for the Armed Forces Covenant from public bodies, charities and many private sector companies who have pledged their support. Panel discussion on challenges and opportunities facing military and civilian integration and how veterans can be better supported were held. Local councillors from the area boards around Salisbury Plain contributed strongly to these discussions to help make it a success.

**Garrisons Development:** Construction work continues at pace behind the wire (Tidworth, Larkhill, Bulford, and Perham Down). Single living accommodation, mess extensions, regimental headquarters and technical buildings are underway or have been completed. Demolition and groundworks have begun at Larkhill for the new ‘Super Diner’; one of the key ‘eat and sleep’ assets to be completed in time for the return of troops in the summer of 2019.

#### **Future Activity**

- Summer 2018: St Michael’s Primary school build is due to complete enabling transfer from Figheldean
- By August 2019: Additional school capacity required by the Army Basing Programme will be completed
- Summer 2019: Majority of Service personnel are due to move to Salisbury Plain.



# MINUTES

**Meeting:** TIDWORTH AREA BOARD  
**Place:** Pheonix Hall, Netheravon  
**Date:** 13 November 2017  
**Start Time:** 7.00 pm  
**Finish Time:** 9.00 pm

---

Please direct any enquiries on these minutes to:

Kevin Fielding (Democratic Services Officer), Tel: 01249 706612 or (e-mail) [kevin.fielding@wiltshire.gov.uk](mailto:kevin.fielding@wiltshire.gov.uk)

Papers available on the Council's website at [www.wiltshire.gov.uk](http://www.wiltshire.gov.uk)

---

## **In Attendance:**

### **Wiltshire Councillors**

Cllr Mark Connolly, Cllr Ian Blair-Pilling and Cllr Christopher Williams

### **Town and Parish Councillors**

Collingbourne Ducis Parish Council – T.Greenwood, Peter Knowlson & K.Millard  
Enford Parish Council – Anthony D’arcy- Irvine  
Everleigh Parish Council – Denis Bottomley  
Ludgershall Town Council – Mike Giles  
Netheravon & Fittleton Parish Council – Mary Towle  
Tidworth Town Council – Humph Jones, Ann Birch & E.O’connell

### **Partners**

Wiltshire Police – Acting Inspector James Williams  
Tidworth Community Area Partnership – Tony Pickernell & Reia Jones  
Lovell – Jessica Wheatley

**Total in attendance: 30**

<u>Agenda Item No.</u>	<u>Summary of Issues Discussed and Decision</u>
56	<p><u>Chairman's Welcome, Introductions and Announcements</u></p> <p>The Chairman welcomed everyone to the meeting of the Tidworth Area Board and thanked Netheravon for hosting.</p> <p>The following Chairman's Announcements were noted:</p> <ul style="list-style-type: none"> <li>• Army Rebasing</li> <li>• Wiltshire Local Plan Review</li> </ul>
57	<p><u>Apologies for Absence</u></p> <p>There were no apologies for absence.</p>
58	<p><u>Declarations of Interest</u></p> <p>There were no declarations of interest.</p>
59	<p><u>Minutes</u></p> <p><b>Decision</b></p> <ul style="list-style-type: none"> <li>• <b>The minutes of the meeting held on Monday 18 September 2017 were agreed as a correct record and signed by the Chairman.</b></li> <li>• <b>It was noted that the Tidworth Town Council update should read <i>"That the Mortuary Chapel would be open on Saturday 23 September with hot refreshments from 2-4pm"</i></b></li> </ul>
60	<p><u>Police Update</u></p> <p>Acting Inspector James Williams presented the written update which was noted.</p>
61	<p><u>Fire &amp; Rescue Update</u></p> <p>The written Dorset &amp; Wiltshire Fire and Rescue update was noted.</p>
62	<p><u>Smoke Free Sports</u></p> <p>Mary Deevers – Public Health Team, Wiltshire Council gave a presentation that highlighted the importance of Smoke Free Sports.</p> <p>Points made included:</p> <p>Why the need for Smoke Free Places</p>



	<ul style="list-style-type: none"> <li>• Smoking in family-friendly playing fields and sports grounds suggests to children that it is acceptable and/or desirable behaviour.</li> <li>• Children playing sport whilst adults are smoking on the side-lines is not promoting positive and consistent messages about health.</li> <li>• Sports clubs and playing fields should be an environment where children are protected and able to enjoy smokefree physical activity .</li> <li>• Playing and maintaining physical activity can protect children from future unhealthy behaviours e.g. smoking and alcohol use.</li> <li>• That voluntary smokefree areas are supported by 89% of adults</li> </ul> <p>The benefits for sports clubs/organisations</p> <ul style="list-style-type: none"> <li>• To make a statement that they are a sports club /organisation who prioritise the health and wellbeing of all its members and visitors.</li> <li>• To protect children from the dangers of second hand smoke and from copying adults who smoke.</li> <li>• To provide a supportive environment for people who are trying to quit, or have recently quit, by removing the temptation to smoke.</li> <li>• To remove the risk of very young children picking up or eating cigarette butts which can be harmful.</li> <li>• To reduce littering around sports club and grounds.</li> </ul> <p>The Chairman thanked Mary Deevers for her presentation.</p> <p>It was agreed that the Community Engagement Manager would contact the local Parish Councils to gauge the level of interest for getting signage produced.</p>
63	<p><u>Wiltshire CIL- Insight Project</u></p> <p>Mary Read – Wiltshire CIL gave a presentation that outlined how CIL wanted to identify what matters to people living in their community area: what makes a difference in their lives, what is important and what they would like to change, so that CIL can find ways to best support the community to be a kind and welcoming place.</p> <p>Points made included:</p> <p>The Plan</p> <p>1:1 in-depth interviews up to 20 people in the Tidworth community area.</p>

	<ul style="list-style-type: none"> <li>– Meetings with groups in the Tidworth community area.</li> <li>– Pull together information and key themes.</li> <li>– Produce an engaging graphic/ map based on these themes.</li> </ul> <p>The Chairman thanked Mary Read with the invitation to a future Area Board to give an update on progress.</p>
64	<p><u>Thematic Group Updates</u></p> <p>Health &amp; Wellbeing Group – Reia Jones</p> <p>Points made included:</p> <ul style="list-style-type: none"> <li>• NHS – non assertive outreach team to work with rough sleepers in the community area.</li> <li>• That contact with the Military Advocacy Service had now been made.</li> <li>• Medivo awarded 111 number contact.</li> <li>• That the Castle Practice’s meeting with Claire Perry MP was to be re-scheduled.</li> </ul> <p>Health &amp; Wellbeing Grant</p> <p><b>Decision</b></p> <ul style="list-style-type: none"> <li>• <b>£2,000 awarded for Our Time Project Theatre Workshops.</b></li> </ul> <p>Dementia Action Alliance Group – Brian Pratt</p> <p>Points made included:</p> <ul style="list-style-type: none"> <li>• That the Memory Cafe continues to go from strength to strength.</li> </ul> <p>Older Person &amp; Carers Champion update – Tony Pickernell</p> <ul style="list-style-type: none"> <li>• Next Tea Dance on Tuesday 7 December, transport to be provided.</li> </ul> <p>Multi Agency Forum – Marc Read</p> <ul style="list-style-type: none"> <li>• Will now be covered as a standard agenda item in future Area board agendas.</li> <li>• Next meeting Thursday 8 March 2018.</li> </ul>



	<p>The Chairman thanked everybody for their updates.</p>
65	<p><u>Grant Funding Review - Tidworth &amp; Ludgershall Men's Shed</u></p> <p>Mike Giles - Tidworth &amp; Ludgershall Men's Shed gave a short presentation that highlighted how grant funding from the Area Board had helped to launch and grow Tidworth Men's Shed.</p> <p>Points made included:</p> <ul style="list-style-type: none"> <li>• That the official opening would be 20 November 2017.</li> <li>• That the Shed members were very grateful to the Area Board for the funding that the shed had received.</li> <li>• That new skilled and un-skilled members were needed.</li> </ul> <p>The Chairman thanked Mike Giles for his presentation.</p>
66	<p><u>Community Area Grants</u></p> <p><b>Decision</b>  <b>The History Group awarded £690 for Voices of Experience - local history booklet.</b>  <b>Reason</b>  <b><i>The application meets grant criteria 2017/18</i></b></p> <p><b>Decision</b>  <b>Enford Avon Valley Youth Club awarded £966.60 for youth club activities programme.</b>  <b>Reason</b>  <b><i>The application meets grant criteria 2017/18</i></b></p> <p><b>Decision</b>  <b>Fittleton Parish Council awarded £706.00 for Defibrillators for Fittleton &amp; Haxton.</b>  <b>Reason</b>  <b><i>The application meets grant criteria 2017/18</i></b></p>
67	<p><u>Community Area Transport Group</u></p> <p>Cllr Mark Connolly introduced the CATG update.</p> <ul style="list-style-type: none"> <li>• That there had been no meeting since the last Area Board.</li> </ul>

	<ul style="list-style-type: none"> <li>• That funding for the Wylie Road, Tidworth footpath was agreed by the Area Board members.</li> </ul> <p>The Chairman thanked Cllr Connolly for his update.</p>
68	<p><u>Community Engagement Manager Update</u></p> <p>Marc Read – Community Engagement Manager.</p> <p>Points made included:</p> <ul style="list-style-type: none"> <li>• WW1 Commemorative tree planting - A proposal for Wiltshire Council to plant 10,000 trees to commemorate the centenary of the end of the First World War. It was to be decided whether a large Wiltshire wood, or smaller community areas would be planted. Parishes could still get involved in this project.</li> <li>• The Wellington Academy Community Lunch – 20 November.</li> <li>• Family Learning Festival – A great success. Now looking to expand the project for next year, with the hope of making this a sustainable event.</li> <li>• Tidworth Healthy Schools – Well done to Castle Primary School, Ludgershall, Clarendon Infants School, Clarendon Junior School, Collingbourne CofE Primary School and the Wellington Academy who all achieved a bronze award.</li> <li>• Col Jamie Balls outlined plans for a Tedworth House, Memory Path, a bid for Area Board grant funding would be sought in due course.</li> </ul> <p>The Chairman thanked Marc Read for his update.</p>
69	<p><u>Updates from Town and Parish Councils, the Police, the Army, NHS, TCAP and other Partners</u></p> <p>Tidworth Garrison</p> <ul style="list-style-type: none"> <li>• That the Garrison Commander was very keen for good community engagement between the Military and the non-military communities.</li> <li>• That Army Rebasing continued to bring big changes to the Tidworth Community area.</li> </ul> <p>Tidworth Town Council</p> <ul style="list-style-type: none"> <li>• That the recent Halloween party had been well attended.</li> </ul>



	<ul style="list-style-type: none"> <li>• That the Remembrance Sunday parade and service had been well attended.</li> </ul> <p>Ludgershall Town Council</p> <ul style="list-style-type: none"> <li>• That 26 Eng Regiment had marched through Ludgershall on Saturday 14 October.</li> <li>• Christmas Fayre – Saturday 2 December.</li> </ul> <p>Lovell</p> <ul style="list-style-type: none"> <li>• That defibrillators were to be installed at Lovell buildings in the local area.</li> </ul> <p>Netheravon &amp; Fittleton Parish Council</p> <ul style="list-style-type: none"> <li>• That a survey had been delivered all homes, looking to encourage more groups to use the Parish Hall.</li> </ul> <p>Collingbourne Ducis Parish Council</p> <ul style="list-style-type: none"> <li>• That a litter pick had been carried out by village volunteers.</li> </ul> <p>The Chairman thanked everybody for their updates.</p>
70	<p><u>Date of Next Meeting and Close</u></p> <p>The next meeting of the Tidworth Area Board will be held on Monday 22 January 2018 at the Wellington Academy, Tidworth.</p>





## Tidworth Area Board Police Report January 2018

### 1. East Community Policing Team

**Sector Head:** A/Insp James Williams

**Sector Deputy:**

**Community Coordinator:** Pc Lucy Wileman

**Tidworth PCSO:** PCSO Maria Downham

### **A Christmas Message from Wiltshire Police Chief Constable Mike Veale:**

"2017 has been a difficult year for policing across the UK for so many reasons. We have seen horrific acts of terrorism but we have also seen the most heroic acts of courage, bravery and fortitude. These tragic events bring into sharp focus the magnificent work of our emergency services, their selflessness, dedication and kindness is simply breath-taking.

"As demand increases and our resources reduce you have remained steadfast, resilient and motivated. Whilst there have been many challenges both locally and nationally I am immensely proud of what Wiltshire Police stand for. Despite the challenges, pressure, scrutiny and, on occasions, the danger you face, there is still a great buzz of positivity which is palpable when I visit different departments and go on the frontline.

"I have been struck this year by not only the amount of feedback and correspondence I have received about the service my staff provide but also the words that constantly resonate when they describe their actions: compassionate, caring, professional, brave, empathetic, sympathetic, inspiring, unbelievable, unforgettable, patient, meticulous, persistent, dedicated, kind, thoughtful, fearless and selfless.

"I recently had the pleasure of hosting our force awards ceremony which honoured just some of the outstanding work, dedication and bravery of officers, staff and the public. It was a very special event which highlighted once again that policing is not 'just a job' it is very much a vocation. Sometimes it is a very dangerous vocation which sadly results in injury, both emotional and physical. To all those people who have lost their lives in the course of their duty and to all those people who are no longer with us, who dedicated their lives to policing, I salute you.

"As we know, police work is hard and with decreasing budgets and fewer officers and staff, it is fair to say that these challenges and demands will continue. This puts more pressure on my staff, particularly their health and wellbeing which continues to be my top priority. It is obvious that if I don't do all that I am able to look after them then I will be letting them down and that is something I am not prepared to do. By looking after my staff, they will be better placed to look after our communities which is a huge honour and privilege.

"The festive period is a time for joy, celebration and reflection. It is also a time when we experience peak demand which can test our services to the limits. I know that everyone on duty will continue to uphold the finest traditions of Wiltshire Police. Many of my staff will miss out on Christmas at home with their families which I know is really difficult. I also know that throughout the year they will have missed key moments and events. So let's spare a thought for all our brilliant people working over the festive period and especially their families.

"To the amazing team of people we have at Wiltshire Police including all our Special Constables and volunteers I would like to say thank you, you make a real difference.

"To all our communities, have a very happy and safe Christmas."

Please follow us on:

Twitter <https://twitter.com/wiltshirepolice>

Facebook <https://www.facebook.com/wiltshirepolice/>

Or sign up to Community Messaging <https://www.wiltsmessaging.co.uk/> Our free Community Messaging service will also help keep you updated about policing and crime in your local area.



## **2. CPT - Current Priorities & Consultation Opportunities:**

### **Current Priorities Tidworth and surrounding areas.**

#### **Patrols of Farms situated in The Chutes**

It became clear from speaking to a farmer on 18<sup>th</sup> Sept and looking at recent reports around this date that the farms situated in The Chutes were starting to be targeted. It was decided to commence a New NTG Priority on this date, we appreciated that the NTG meeting was set for 26<sup>th</sup> Sept and usually such a decision is discussed at this meeting however felt that we needed to commence this as soon as possible and update the group at the NTG. This would also not affect any additional topics that would be raised.

So on 19<sup>th</sup> Sept the Priority commenced, at this time the following farms will be patrolled in line with recent information and issues raised. New Zealand Farm, Gammons Farm, Chrystal Palace Farm & Deans Farm. In total 8 patrols/actions have taken place. Depending on information received the locations will be reviewed. To date 43 patrols/actions have taken place.

#### **Theft from Motor Vehicles**

This new priority for the whole patch has been agreed prior to the up and coming NTG Meetings for Amesbury/Durrington/Tidworth/Ludgershall

Following a slight increase in Vehicles offences, it has been decided that this needs to be in place. In particular work vans are being broken into with an unknown device. According to some local companies this is happening all of the South West. Some analytical work has commenced. Pc Wileman and the PCSO's will commence crime prevention work shortly. Numbers are low locally at the moment and we wish to keep it this way.

The beauty spot signs which Area Board funded have now arrived, Pc Wileman is now co-ordinating the signs being put up at the areas which were targeted earlier this year.

### **Target Patrols Tidworth and surrounding areas**

#### **Co-Op – Ludgershall**

Due to a series of thefts a reassurance patrol commenced at the store on 17<sup>th</sup> October, the patrols continued until 8<sup>th</sup> November. We are pleased to say there were no reported incidents during this time and 23 patrols were actioned.

### **Saddle Club**

A burglary took place at the Saddle Club on 22<sup>nd</sup> November, in light of this a target patrol commenced. In total 17 patrols took place and no further incidents were reported. The patrol closed down on 8<sup>th</sup> December.

### **Minden Way & Soper Crescent**

A report was raised by RMP on 21<sup>st</sup> November of suspicious activity taking place in **Minden Way**. A resident had reported that her door handle was being tried during the hours of darkness. A patrol commenced and a week later similar activities were reported in Soper Crescent, the patrols remained open until 11<sup>th</sup> December. In total 32 patrols were actioned.

### **Op Eskimo**

Op Eskimo was launched on the 8<sup>th</sup> December. The aim of this was to mount a visible uniformed operation, supported by plain clothes officers in local town centres prior to Christmas Day by working at certain times and targeting identified stores which have a high shoplifting rate. By working in conjunction with partner agencies in the town in order to try and identify known and potential offenders and to dissuade them from committing offences.

To allow for a patrol strategy and implementation to disrupt and deal with criminality namely shoplifting and purse dips.

Patrol to be in place from today until 24<sup>th</sup> December. In total 21 patrols took place. Purse chains and crime prevention leaflets were handed out.

### **Arnott Close**

We received an initial complaint regarding Anti social behaviour from one resident . On 24<sup>th</sup> November we commenced a target patrol to offer reassurance . In order to obtain any further intelligence anti social behaviour surveys were handed out to 40 residents, only a few were returned and the patrol closed down on 4<sup>th</sup> December due to no further reports.. In total 18 patrols were actioned.

### **Chrystal Palace and New Zealand Farm**

Further patrols of Chrystal Palace and New Zealand Farm, Upper Chute were set up on the 18<sup>th</sup> December due to two thefts in one week. This makes a total of 8 thefts from this farm in 6 months. To date 10 patrols/ Actions have taken place.

### **Aughton Farm and Parsonage Farm**

Patrols of Aughton Farm and Parsonage Farm were set up on the 19<sup>th</sup> December due to several reports of Hare Coursing across the farms

### **Drugs**

Warrant executed in Ludgershall on 30<sup>th</sup> November 2017, small amount of Cannabis seized.



## Neighbourhood Tasking Meeting

The next meeting is due to take place on 5<sup>th</sup> January 2018 at 14.30 hours at the Tidworth Police Station.

## Media

Maria has agreed to do a regular slot on Castledown Radio with Brian Pratt and Marc Read.

## Consultations

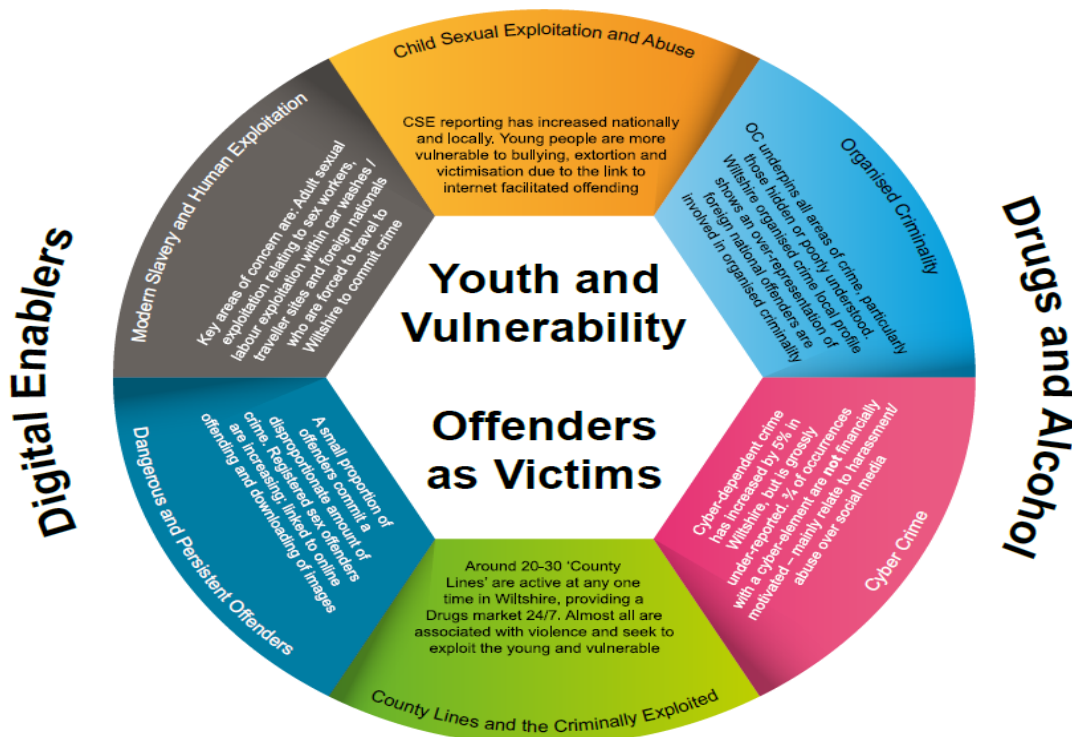
You PCSO's are carrying out consultations on their areas.

## Update re Rural Crime Partnership

Rural crime operations continue, in our efforts to target what is often cross border organised criminal activity.

### 3. Wiltshire Police Control strategy

Below is our Control Strategy for your reference. This focuses on how we conduct our operational policing based on the Police and Crime Plan. We will continue to align our resources with the threat/harm/risks presented in line with the control strategy.



## **Child sexual exploitation and abuse**

Young people often enter the criminal justice system as a direct result of being exploited by others for financial or sexual gain. This has been recognised recently with a shift in focus to these young people being dealt with as Criminally Exploited and Vulnerable (CEV) individuals. Where circumstances dictate, this will mean that the safeguarding of these young people will take precedence over any criminal offences they may have committed. Those doing the exploiting are the individuals that should be targeted.

Please be vigilant for young people who may be being exploited in this way and report to Police through the normal channels.

## **Organised criminality**

Operation Sirius is a dedicated response team investigating Asian Gold burglaries, one of which recently occurred within this area. Our local officers have also been engaging with businesses in the town requesting they report anything or anyone acting suspiciously in their neighbourhood, unknown or unexpected doorstep traders, unusual vehicles, many offenders use high performance vehicles. Please be mindful if you see such a vehicle driving around your area. We work closely with forces nationally, sharing information, helping to tackle this criminality which occurs throughout the country.

## **Cybercrime**

Our Cyber Crime Prevention Officer is working closely with our partners within the region including attending Area Boards.

Many of the cyber scams which succeed occur following an individual's response to act quickly to an instruction or use distraction techniques so that less concentration occurs on the task in hand.

## **County Lines and the Criminality Exploited**

A total of 20 drug dealers from Salisbury have this week been sentenced following an operation targeting class A drug supply in the city.

The following all pleaded guilty to class A drug supply offences in the summer. They were all remanded in custody and sentenced as follows:

- Christian Quadjovie, age 18, of Barge Walk, Greenwich, sentenced to two-and-a-half years imprisonment
- Tomisin Ifelowa, age 19, of Williamson Close, Greenwich, sentenced to two-and-a-half years imprisonment
- Shavase Lemar-Taylor, age 27, of Propeller Crescent, Croydon, sentenced to 15 months imprisonment suspended for 12 months
- Pellumb Buci, age 18, of Villas Road, London, sentenced to three years imprisonment
- Jennifer Cooper, age 34, of no fixed abode, Bulford, sentenced to two years imprisonment suspended for two years
- Ollie Piper, age 25, of Barnard Street, Salisbury, sentenced to two years imprisonment suspended for two years
- Joshua Jackson, age 18, of Pitfield Crescent, London, sentenced to 15 months imprisonment

The below, who were not in custody, pleaded guilty to class A drug supply offences and were sentenced today and yesterday as below:

- Brendan Cooper, age 39, of no fixed abode, Salisbury, sentenced to three years and four months imprisonment and subject to a five year criminal behaviour order
  - Justin Ling, aged 46, of Barnard Street, Salisbury, sentenced to two years imprisonment suspended for two years
  - Wayne Dix, aged 37, of Barnard Street, Salisbury, sentenced to 12 months imprisonment suspended for 12 months
  - Dean Cochrane, 36, of Rolleston Street, Salisbury, sentenced to two-and-a-half years imprisonment
  - Timmy Thomas, aged 51, of Bishopdown Road, Salisbury, sentenced to 12 months suspended for 12 months
  - Tracey Robertson, aged 41, of Cherry Close, Salisbury, was sentenced to 18 months imprisonment suspended for two years
  - Daniel Domanski, aged 30, of Carmelite Way, Salisbury, was sentenced to 18 months imprisonment suspended for two years
  - Helen Hughes, aged 41, of Elm Grove Road, Salisbury, sentenced to two years imprisonment suspended for two years
  - Mark Ledsome aged 43, of Southampton Road, Salisbury, sentenced to three years and four months imprisonment
- Stephen Maidment, aged 52, of Lovatt Green, Salisbury, will be sentenced at a date to be fixed.
- A warrant has been issued for Shaun Green, aged 35, of Drake Close, Bishopdown, and Jacqui Crotty, age 41, of Netherhampton Road, Salisbury, who both failed to appear in court.

At previous hearings, the following were also sentenced as part of the operation:

- Maxi Andrews, aged 23, of Duke Street, Nottingham, pleaded guilty to conspiring to supply class A drugs (heroin) and was sentenced to 40 months imprisonment
- Darren Davis, aged 22, of Highbury Road, Nottingham, pleaded guilty to conspiring to supply class A drugs (heroin and crack cocaine) and was sentenced to four years imprisonment
- Jason Dowding, aged 29, of St Albans Road, Nottingham, pleaded guilty to possession with intent to supply class A drugs (heroin) and was sentenced to 24 months suspended for two years
- Michael Hughes, aged 31, of Odstock Road, Salisbury, pleaded guilty to supply class A drugs (heroin) and was jailed for 40 months.

On July 12 and 13, a series of early morning raids were carried out across the city. More than 100 officers were involved in the intelligence-led operation making it one of the biggest of its kind to be undertaken by Wiltshire Police.

The carefully-planned op identified issues around County Lines.

County Lines are a national and regional issue - it refers to a group or gang, usually based in cities, who establish the supply of Class A drugs into smaller towns. Gang violence and exploitation is often linked to County Lines supply and there is a significant risk of emotional and physical harm to those they exploit or those who are indebted to them. Young and vulnerable people are often coerced into running or selling the drugs.

Some vulnerable people living in housing association and council accommodation are deliberately targeted and lose control of their homes to the dealers/suppliers through intimidation and fear. The dealers from out of town will then use the property as a base - this is known as 'Cuckooing'.

Detective Inspector Paul Franklin said: "A huge amount of intelligence gathering was carried out in the months prior to this operation to ensure we were able to submit files to the CPS and charge the offenders immediately.



“The aim of the operation was to target the supply of class A drugs coming in to the city, and by taking out so many dealers in just two days we were able to disrupt and dismantle a number of chains of supply. A number of these people were from out of town, and had come to the city to exploit some of our most vulnerable drug users. By carrying out these raids, we were able to remove these people from our streets, and provide support to the most vulnerable members of our society.

“During the raids, we found a number of vulnerable people who were being cuckooed. They were being kept in their homes and had been threatened with violence if they went to police.

“We recognised that this number of arrests would effectively leave a gap in the market for drug users and addicts and in the weeks that followed, we worked closely with Turning Point, Wiltshire Council and Motiv8 to ensure help and support was provided to those in need. This was an example of some really effective partnership working and I know Turning Point saw a rise in the number of referrals during this time.

“I am satisfied with the sentences handed out to these dealers. County lines are sophisticated drug networks and bring highly addictive substances into our community. One of our priorities is targeting the violence and potential exploitation these dealers bring with them. I want to make it clear that Wiltshire may be a rural county, but we are not a soft touch and drug dealers who believe they can come to our county to deal drugs under the police radar are mistaken. We remain dedicated to targeting dangerous drug networks and county lines, and the threat, harm and risk they pose to our communities, and we are continuing to regularly put offenders behind bars as a result of the hard work of our dedicated crime teams.”

Assistant Chief Constable Kier Pritchard added: “This operation was a significant undertaking by officers from all over the force - a huge amount of planning, organising and intelligence gathering was required to ensure the two days of raids were a success. I am really pleased that we have been able to put 10 dealers behind bars, preventing them from exploiting our vulnerable members of society.

“I’d like to continue to stress the important role members of the public have in helping us tackle class A drug supply. Over recent weeks we have been raising awareness of the tell-tale signs of drug dealing and cuckooing - if you suspect any drug activity taking place in your neighbourhood, please call police on 101.”

Salisbury Sector Inspector Pete Sparrow said officers will continue to tackle class A drug supply in the area despite the court result.

“Although this investigation has focused on Salisbury, the tendrils of associated crime has impacted upon a much wider vulnerable society,” he said.

“We continue to do all that we can to protect our vulnerable sector and make it as difficult as possible to prevent these County Line Drug Networks from establishing any stable base in the future. Although the sentencing sends a very positive message, it is important that we continue to remain proactive in any action taken.”

Hayley Porter-Straw, District Crown Prosecutor for the Crown Prosecution Service Wessex said: “As a result of the thorough investigation by Wiltshire Police, the Crown Prosecution Service was able to put a strong case before the court, resulting in a number of guilty pleas. CPS Wessex and Wiltshire Police are strongly committed to tackling vigorously those involved in the supply of drugs. This prosecution demonstrates how our close collaboration has resulted in these successful prosecutions.”

### **Dangerous and Persistent offenders**

Work is continuing with our SWITCH nominals, (those who are identified as persistent and prolific offenders), including intelligence gathering and relevant actions following dissemination. We currently have two nominals within the East Policing Area classified as such and we work closely with our SWITCH team members and partner agencies to manage these offenders.

## **Modern Slavery and Human Exploitation**

### **Wiltshire Police and PCC response to HMICFRS Modern Slavery report 24 October**

Detective Superintendent Craig Holden said: "Today's report serves as an important reminder that police forces must take a robust approach to modern slavery and human trafficking - this is a complex area of modern day policing and it can be demanding on resources, but that should never deter us from ensuring we are doing everything we can to protect victims.

"Tackling modern slavery in our communities is something that we place a lot of emphasis on.

Fundamentally, it is about protecting the most vulnerable in society and we've made it one of our top priorities where we will be focusing our resources.

"A steady flow of information from the public is vital in the fight against Modern Slavery and we are making positive strides in this area too. We are raising awareness of this issue both internally with officers and staff and externally, within our communities. They are the eyes and ears that provide the local intelligence needed to help us continue to target businesses and individuals that traffic and exploit vulnerable people.

"Combining our day-to-day frontline resources with specialists is also a critical component of our approach. Our dedicated Human Exploitation and Emerging Threats (HEET) team is central to us tackling this type of crime. They gather and analyse information to help us better understand where the specific threats exist in our communities. They then use that to set in motion operations (both locally and with our partners in the Regional Organised Crime Unit) that disrupt and dismantle criminal exploitation of vulnerable people.

"Over the course of the last year, we have carried out operations in a number of areas all related to modern slavery and human trafficking. These have included tackling and closing down 'pop up' brothels in Swindon and identifying labour exploitation in nail bars and car washes across the county. Modern slavery is complex and manifests itself in a number of ways. We will continue to focus our activity on the issues that have the greatest impact on our communities.

"Let me be clear, we will not tolerate any form of exploitation and we want victims to feel confident in reporting to us, safe in the knowledge that we will support them alongside our partners.

"Of course, modern slavery is not just an issue for the police. There are so many other areas that it impacts, from public health to housing to child protection. We work closely with our partners as part of the Swindon and Wiltshire Anti-Slavery Partnership (which is chaired by Wiltshire Police) to ensure that collectively we are working together to tackle these issues and put plans in place to provide support to victims.

"The welfare of victims is paramount and should always remain our priority. Modern slavery and human trafficking are abhorrent crimes and community based intelligence is crucial in investigations of this nature. Working together we can put a stop to the exploitation of the vulnerable. Call 101, or Crimestoppers on 0800 555 111 where information can be left anonymously. You can also contact the Modern Slavery helpline confidentially at any time, day or night on 08000 121 700".

Police and Crime Commissioner for Wiltshire and Swindon Angus Macpherson said: "Protecting the most vulnerable in society is one of the four priorities of my Police and Crime Plan and I welcome this report from HMICFRS into what is a serious, complex and challenging issue for police forces and partners across the country.

"Modern Slavery is not just a 'big city issue'. Wiltshire is a safe place to live but that doesn't mean it is immune to issues like modern slavery.

"The Chief Constable and his team must continue to 'lift the stone' on this toxic crime in our communities. I want to see offenders brought to justice wherever possible though close cooperation with our partners."

## **Domestic Abuse**

A third of DA perpetrators are repeat offenders. A quarter of offenders have also been the victim of DA.

**James Williams**  
Sector Inspector,  
Wiltshire East CPT

## Chairman's Announcements

<b>Subject:</b>	<b>Office of the Police and Crime Commissioner 2018 Precept Proposal Consultation</b>
<b>Officer Contact Details:</b>	<a href="mailto:pcc@wiltshire.pcc.pnn.gov.uk">pcc@wiltshire.pcc.pnn.gov.uk</a>

### **Residents asked if they would pay an extra £1 a month to protect local policing**

*"Would you be prepared to pay an extra pound a month to protect our police Force?" That's the question being asked by Police and Crime Commissioner for Wiltshire and Swindon Angus Macpherson.*

*The policing precept consultation which launches 2 January is looking for the views of Wiltshire residents on the proposed increase of £12 a year.*

*Currently the average band D household contributes £14.19 per month to local policing, but if residents back the proposal then this would rise to £15.19 per month.*

*Angus Macpherson said, "As a Force, Wiltshire Police has seen the second highest increase in demand across the country in the last year yet the funding we receive from central government doesn't recognise the increasing pressures our service is under.*

*"In fact we receive the fourth lowest funding per head of population in England and Wales.*

*Since 2010, Wiltshire Police has received £19 million less but have been responding to more crimes and supporting more members of the public year on year.*

*Mr Macpherson added, "Whilst we live in an incredibly safe county, there's only so far the budget will stretch and we're streamlining our services to ensure they're as efficient as possible at the same time as keeping the public safe, but we are feeling the squeeze more than ever.*

*"Without this increase Wiltshire Police will have to look at further reductions in officers and staff to close a budget gap of around £3m.*

*"That's why I'm asking whether residents in Wiltshire and Swindon would be prepared to pay an extra £1 a month to help bridge this gap.*

*"This increase will mean that I can protect frontline services from further reductions and maintain the current level of service."*

*The consultation which runs from 2nd January 2018 to midday 31st January 2018 wants to hear your views on the proposed increase.*

*For more information on how to share your views please visit [www.wiltshire-pcc.gov.uk](http://www.wiltshire-pcc.gov.uk), you can also email [pcc@wiltshire.pcc.pnn.gov.uk](mailto:pcc@wiltshire.pcc.pnn.gov.uk) or use #AskAngusPCC on social media.*





PROTECT



## Tidworth Area Board Report

January 2018

### Recruitment Campaign

Dorset & Wiltshire FRS is now started a process of whole-time recruitment. This began in November and is still on-going. Prior to this the Service has run six “have-a-go-sessions” so that under-represented groups in our community can see what it is like to be a firefighter.

Three of these have been in the Wiltshire area, Swindon, Salisbury & Trowbridge. Despite numerous campaigns in the past, female and BME groups are still under-represented in the Fire Service and we are hoping that this positive action will help destroy some of the myths about the job.

### Want to become an On-Call firefighter ? Or know someone who does?

On-call Firefighters provide a part-time service around other commitments. They let us know when they are available and respond to emergency call outs.

To find out more about the role please visit the ‘Working for us’ pages of our website or drop into the station on a Wednesday evening for a chat.

We also have opportunities for **Volunteers**. If you are interested please see the Service Web-site, contact Neil Chamberlain or speak to me. My contact details are at the end of this report.

### ‘Safe and Well’ and ‘Health and Well-Being’

The Service is keen to maintain a link between our **Safe and Well advisors** and **Health and Wellbeing** activities across the Tidworth area. I am always happy to discuss Service activities in terms of working together in this area.

The Service is looking to work with the Group to supply information on vulnerable households through our software programme ‘**Pinpoint**’. This will identify the high risk premises, within our Community Area, and allow both the Service and local groups to engage in joint working and information sharing in order to protect the most vulnerable members of our community.

PROTECT

## PROTECT



### **Safe and Well Visits- Home safety**

The Community area has a dedicated Fire Service '**Safe and Well**' advisor who can visit people, within their own homes, advising on home safety and wellbeing.

A Safe and Well visit is **FREE** and normally last about one hour covering topics such as:

- Using electricity safely
- Cooking safely
- Making an escape plan
- What to do if there is a fire
- Keeping children safe
- Good practice – night time routine and other points relevant to you
- Identifying and discussing any further support the occupier may need

If you have thatch property, are living alone, have a young family, are over 65 or a smoker please get in contact with us. We want to help make you safer in your own home. If you or someone you know has mobility or sight and hearing impairments, please suggest a Safe and Well visit.

Visit <http://www.dwfire.org.uk/news/new-name-new-contact-details-same-service/> to book one.

### **DW Fire and 'Safety Weeks'**

**The Service** has been supporting a number of various "Safety Weeks" during the last quarter. This support has generally been in the form of giving advice through media outputs and during safe and well visits and Business Fire Safety interventions. These last few months have seen the following campaigns:

- Chimney Fire Safety Week
- Business Safety week
- Gas Safety week
- UK Home Safety week
- Candle Safety week
- National Burn awareness day
- Student Fire Safety Week

## PROTECT

## PROTECT



### **Incidents of note.**

- 1 Dwelling fires involving domestic electrical appliances- Hot-strikes carried out to neighbouring properties, advise given to owners
- 1 small vehicle fire- car
- 3 small fires in the open

### **Special Service Calls**

- 2 Road traffic collision- Persons injured, first aid rendered by Fire Service
- 1 Road Traffic Collision involving Large Goods Vehicle Person extricated by FRS
- Assist Ambulance staff- Persons collapsed/gain entry- 1 incident
- One incident of domestic flooding

### **Fire & Rescue Service Community Safety Plan**

The Service Community Safety Plan 2017 – 2021 outlines our plans for the future. It explains the diverse services we provide and how we plan to improve and deliver them over the four-year period. The plan can be found on our website

<http://www.dwfire.org.uk/community-safety-plan/>

### **Dorset & Wiltshire Fire and Rescue**

- Helping you make Safer and Heathier choices
- Protecting you and the Environment from Harm
- Being there when you need us
- Making every penny count
- Supporting and developing our People

Jack Nicholson GIFireE

**Station Manager, Marlborough, Ramsbury, Pewsey and Ludgershall**

Dorset & Wiltshire Fire and Rescue Service

Telephone: 01722 691 242

Mob. 07809 548048

Email: [jack.nicholson@dwfire.org.uk](mailto:jack.nicholson@dwfire.org.uk)

Web: [www.dwfire.org.uk](http://www.dwfire.org.uk)

## PROTECT







## Health and Wellbeing projects and activities FUNDING APPLICATION

**1. Applicant:**

Name	Nick Self, Project Officer
Organisation	Wiltshire Wildlife Trust
Address	Elm Tree Court, Long Street, Devizes SN10 1NJ
Phone number	01380 829051 or 01380 7336 098
Email address	nicks@wiltshirewildlife.org

**2. Amount of funding required from the Area Board:**

£0 - £1000	
£1001 - £5000	£2,000
Over £5000 (please note – our grants will not normally exceed £5000)	

**3. Are you applying on behalf of a Parish Council?**

Yes	
No	X

**4. If yes, please state why this project cannot be funded from the Parish Precept?**

**5. Project title?**

Wellbeing – Therapy Through Nature (eight week pilot programme)

**6. Project summary: (100 words maximum)**

The 'Wellbeing – Therapy Through Nature' programme (eight week pilot) will improve the wellbeing of people experiencing mental health issues by providing nature-based activities. The pilot project will aim to give participants the skills they need to improve and manage their own mental wellbeing beyond the eight weeks. This short programme is modelled on the Adult Wellbeing Programme which the Trust has been running since 2008 and will run in a community area where the local people have been unable to access and benefit from the existing programme.

**7. Which Area Board are you applying to?**

Tidworth
▼

**8. What is the Post Code of the place where your project is taking place?**

SP9

**9. Please tell us which themes best describe your project:**

<input type="checkbox"/> Intergenerational projects	<input type="checkbox"/> Heritage, history and architecture
<input type="checkbox"/> Older People Support/Activities	<input checked="" type="checkbox"/> Inclusion, diversity and community spirit
<input type="checkbox"/> Carers Support/Activities	<input checked="" type="checkbox"/> Environment, recycling and green initiatives
<input checked="" type="checkbox"/> Promoting physical and mental wellbeing	<input type="checkbox"/> Sport, play and recreation
<input checked="" type="checkbox"/> Combating social isolation	<input type="checkbox"/> Transport
<input checked="" type="checkbox"/> Promoting cohesive/resilient communities	<input type="checkbox"/> Technology & Digital literacy
<input checked="" type="checkbox"/> Arts, crafts and culture	<input checked="" type="checkbox"/> Other
<input type="checkbox"/> Safer communities	

If Other (please specify)

Nature conservation

**10. About your project**

**Please tell us about your project (a strong application will address all of the following):**

How does your project support local needs and priorities?

The last few years has seen a greater awareness of mental health issues and a push to improve people's wellbeing – both mental and physical.

Wiltshire Wildlife Trust's Adult Wellbeing Programme has been running in Wiltshire since 2008, with geographical areas that have covered the north and the south of the county. Tidworth has been a difficult area to cater for as it falls between the two regions; historically we have received few referrals from this area as local people may not have been able to get to the pick-up points for the different groups.

This tailor-made programme, will be based in Tidworth, for the people of Tidworth, working together in a small group, on local sites that will benefit them and the local community.

How many older people/carers to do you expect to benefit from your project?

The group will consist of up to 12 adult participants, and is aimed at those who are experiencing mental health issues (like depression, anxiety, stress, low mood). The programme will be open to adults and there is no upper age limit. Carers are welcome to come along to the group to support the person they are caring for. The programme will not only benefit those taking part, but is likely to indirectly also benefit the participants' family, friends and other members of the wider community.

How will you encourage volunteering and community involvement?

The pilot programme will give participants a taste of what can be achieved by getting involved in a local group and will be encourage to continue engaging with this type of work beyond the initial eight weeks. We will work with the community engagement manager to identify and promote suitable opportunities for onward volunteering and community involvement.

How will you ensure your project is accessible to everyone (for example: people living with a disability or on low incomes, or vulnerable, or socially isolated etc.)?

The programme will be open to everyone over 18 who is experiencing mental health difficulties. People living with disabilities are welcome to take part and will be considered on a case-by-case basis. There will be no charge to the participant so all sectors of the community can benefit regardless of income. Participants will come together as a group to build relationships, form friendships and help reduce social isolation.

How will you work with other community partners?

We will work closely with the local GP practice and organisations managing the local sites where activities will be based.

## 11. Safeguarding

**Please tell us about how you will protect and safeguard vulnerable people in your project (You must address all of the following):**

- Please provide evidence of your commitment to safeguarding and promoting the welfare of older/vulnerable people and their carers.
- How do you make sure staff and volunteers understand their safeguarding responsibilities?
- Who in your organisation is ultimately responsible for safeguarding?



Wiltshire Wildlife Trust has a safeguarding policy which can be emailed to you if you need to review this. The two members of staff responsible for safeguarding issues are Derek Gard and Debbie Chambers. All staff receive safeguarding training within a few months of starting their employment with the Trust.

## 12. Monitoring your project.

**How will you know if your project has been successful? \*required field**

We will use the Warwick Edinburgh Mental Well-Being questionnaire to assess participants' wellbeing at the start, during and on completion of the programme. In addition, we will encourage feedback from each participant after each session to gauge how they feel about the work they are doing. Participants will be contacted again 3 and 6 months after completion of the programme to assess their ongoing wellbeing and what impact the programme has had.

## 13. If your project will continue after the Wiltshire Council funding runs out, how will you continue to fund it?

This is an eight week pilot providing support to the local people of Tidworth who have been unable to access and benefit from the existing Adult Wellbeing Programme. The pilot will also enable us to assess the value of a short term wellbeing programme run in a community area. If the pilot proves to be successful we will seek funding from alternative sources such as Public Health and the CCG to continue to run eight week programmes.

## 14. If this application forms part of a larger project (eg. building of new village hall), please state what this project is and approximately how much the overall project will cost

## 15. Finance:

### 15a. Your Organisation's Finance:

#### Your latest accounts:

Month  Year

#### Total Income:

£

**Total Expenditure:**

£ 3,125,284

**Surplus/Deficit for the year:**

£ 252,155

**Free reserves currently held:**

**(money not committed to other projects/operating costs)**

£

**Why can't you fund this project from your reserves:**

The Trust is making a contribution to the overall project cost; how ever as a charity we need to hold reserves for emergencies, sickness and maternity cover and redundancies.

We are a small community group and do not have annual accounts or it is our first year:

**15b. Project Finance:**

Total Project cost £ 2,906

Total required from Area Board £ 2,000

**Expenditure      £                      Income                      £                      Tick if income confirmed**

NB. If your organisation reclaims VAT you should exclude VAT from the expenditure (Planned project costs [help](#))  
(Planned Income [help](#))

Staff delivery time	2,394	In kind (staff delivery	906	<input checked="" type="checkbox"/>
Resources	120			<input type="checkbox"/>
Mileage	392			<input type="checkbox"/>
				<input type="checkbox"/>
				<input type="checkbox"/>
				<input type="checkbox"/>
				<input type="checkbox"/>
				<input type="checkbox"/>
				<input type="checkbox"/>
				<input type="checkbox"/>
<b>Total</b>	<b>2,906</b>	<b>Total</b>	<b>906</b>	

**16. Have you or do you intend to apply for a grant for this project from another area board within this financial year? \*required field**

- Yes  
 No

17. Please list which area boards you are intending to apply, including this one (You can apply to a maximum of 3 Area Boards for the same project in a financial year) \*required field, if Yes to Q11.

Tidworth

## 18. DECLARATION

**Supporting information - Please confirm that the following documents will be available to inspect upon request (You DO NOT need to send these documents to us):**

### Quotes:

- I will make available on request 1 quote for individual project costs over £500 & 2 quotes for project costs over £1000 (Individual project costs are listed in the expenditure section above)

### Project/Business Plan:

- For projects over £50,000: I will make available on request a **project or business plan** (including estimates) for projects where the **total project cost** (as declared in the financial section above) exceeds £50,000 (tick only when total project cost exceeds £50,000).

### Accounts:

- I will make available on request the organisation's **latest accounts**

### Constitution:

- I will make available on request the organisation's Constitution/Terms of Reference etc.

### Policies and procedures:

- I will make available on request the necessary and relevant policies and procedures such as Child Protection, Safeguarding Adults, Public Liability Insurance, Access audit, Health & Safety and Environmental assessments.

### Other supporting information (Tick where appropriate, for some project these will not be applicable):

- I will make available on request evidence of ownership of buildings/land
- I will make available on request the relevant planning permission for the project.
- I will make available on request any other form of licence or approval for this project has been received prior to submission of this grant application.

### And finally...

- I confirm that the information on this form is correct, any award received will be spent on the activities specified.



<b>Report to</b>	Tidworth Area Board
<b>Date of Meeting</b>	22/01/2018
<b>Title of Report</b>	Community Area Grant funding

**Purpose of the report:**

To consider the applications for funding listed below

<b>Applicant</b>	<b>Amount requested</b>
<b>Applicant:</b> Girlguiding Tidworth District <b>Project Title:</b> Tidworth District Gazebo and event materials  <a href="#">View full application</a>	£625.49
<b>Applicant:</b> Fittleton Parish Council <b>Project Title:</b> Kissing Gate for Fittleton Footpath 3  <a href="#">View full application</a>	£500.00

**1. Background**

Area Boards have authority to approve Area Grants under powers delegated to them. Under the Scheme of Delegation Area Boards must adhere to the [Area Board Grants Guidance](#)

[The funding criteria and application forms](#) are available on the council's website.

**2. Main Considerations**

2.1. Councillors will need to be satisfied that funding awarded in the 2015/2016 year is made to projects that can realistically proceed within a year of it being awarded.

2.2. Councillors must ensure that the distribution of funding is in accordance with the Scheme of Delegation to Area Boards.

2.3. Councillors will need to be satisfied that the applications meet the Community Area Board grants criteria.

**3. Environmental & Community Implications**

Grant Funding will contribute to the continuance and/or improvement of cultural, social and community activity and wellbeing in the community area, the extent of which will be dependent upon the individual project.



#### 4. Financial Implications

Financial provision had been made to cover this expenditure.

#### 5. Legal Implications

There are no specific legal implications related to this report.

#### 6. Human Resources Implications

There are no specific human resources implications related to this report.

#### 7. Equality and Inclusion Implications

Community Area Boards must fully consider the equality impacts of their decisions in order to meet the Council's Public Sector Equality Duty.

Community Area Grants will give local community and voluntary groups, Town and Parish Council's equal opportunity to receive funding towards community based projects and schemes, where they meet the funding criteria.

#### 8. Safeguarding Implications

The Area Board has ensured that the necessary policies and procedures are in place to safeguard children, young people and vulnerable adults.

#### 9. Applications for consideration

Application ID	Applicant	Project Proposal	Requested
<a href="#">2580</a>	Girlguiding Tidworth District	Tidworth District Gazebo and event materials	£625.49
<b>Project Description:</b> We require a gazebo and event material to help advertise girlguiding whilst participating in various events locally. This will be used by all Rainbow Brownie and Guides units within Tidworth and Netheravon. The gazebo will also be used whilst attending various girlguiding events across the county.			
<b>Proposal</b> That the Area Board determines the application.			

Application ID	Applicant	Project Proposal	Requested
<a href="#">2651</a>	Fittleton Parish Council	Kissing Gate for Fittleton Footpath 3	£500.00
<b>Project Description:</b> The kissing gate in situ is too small. A new metal kissing gate which is strong enough to contain cattle is needed.			
<b>Proposal</b> That the Area Board determines the application.			

No unpublished documents have been relied upon in the preparation of this report

**Report Author:**

Marc Read

Community Engagement Manager

01722 434557

[Marc.Read@wiltshire.gov.uk](mailto:Marc.Read@wiltshire.gov.uk)



Grant Applications for Tidworth on 22/01/2018

ID	Grant Type	Project Title	Applicant	Amount Required
2580	Community Area Grant	Tidworth District Gazebo and event materials	Girlguiding Tidworth District	£625.49
2651	Community Area Grant	Kissing Gate for Fittleton Footpath 3	Fittleton Parish Council	£500.00

2580	Community Area Grant	Tidworth District Gazebo and event materials	Girlguiding Tidworth District	£625.49
------	----------------------	--	-------------------------------	---------

**Submitted:** 16/10/2017 11:23:51

**ID:** 2580

**Current Status:** Application Received

**To be considered at this meeting:**

tbc contact Community Area Manager

**1. Which type of grant are you applying for?**

Community Area Grant

**2. Amount of funding required?**

£0 - £500

**3. Are you applying on behalf of a Parish Council?**

No

**4. If yes, please state why this project cannot be funded from the Parish Precept**

**5. Project title?**

Tidworth District Gazebo and event materials

**6. Project summary:**

We require a gazebo and event material to help advertise girlguiding whilst participating in various events locally. This will be used by all Rainbow Brownie and Guides units within Tidworth and Netheravon. The gazebo will also be used whilst attending various girlguiding events across the county.





Expenditure (Itemised expenditure)	£	Income (Itemised income)	Tick if income confirmed	£
pop up gazebo	199.99			
Girlguiding branded sails	250.00			
Girlguiding branded bunting	30.00			
Girlguiding branded tablecloth	60.00			
Sails weights	75.00			
carrying bag	10.50			
<b>Total</b>	<b>£625.49</b>			<b>£0</b>

**11. Have you or do you intend to apply for a grant from another area board within this financial year?**

No

**12. If so, which Area Boards?**

Tidworth

**13. Please tell us WHO will benefit and HOW they will benefit from your project benefit your local community?**

Girlguiding will be able to attend events and be on brand. The gazebo will also be used for units attending events meaning they will have somewhere dry during inclement weather

**14. How will you monitor this?**

After every event we always review how the event went

**15. If your project will continue after the Wiltshire Council funding runs out, how will you continue to fund it?**

na

**16. Is there anything else you think we should know about the project?**

na

**17. DECLARATION**

**Supporting information - Please confirm that the following documents will be available to inspect upon request:**

**Quotes:**

yes I will make available on request 1 quote for individual project costs over £500 & 2

quotes for project costs over £1000 (Individual project costs are listed in the expenditure section above)

**Accounts:**

yes I will make available on request the organisation's **latest accounts**

**Constitution:**

yes I will make available on request the organisation's Constitution/Terms of Reference etc.

**Policies and procedures:**

yes I will make available on request the necessary and relevant policies and procedures such as Child Protection, Safeguarding Adults, Public Liability Insurance, Access audit, Health & Safety and Environmental assessments.

**Other supporting information (Tick where appropriate, for some project these will not be applicable):**

**And finally...**

yes The information on this form is correct, that any award received will be spent on the activities specified.

2651	Community Area Grant	Kissing Gate for Fittleton Footpath 3	Fittleton Parish Council	£500.00
------	----------------------	---------------------------------------	--------------------------	---------

**Submitted:** 12/12/2017 12:49:36

**ID:** 2651

**Current Status:** Application Received

**To be considered at this meeting:**

tbc contact Community Area Manager

**1. Which type of grant are you applying for?**

Community Area Grant

**2. Amount of funding required?**

£0 - £500

**3. Are you applying on behalf of a Parish Council?**

Yes

**4. If yes, please state why this project cannot be funded from the Parish Precept**

We are applying for a PIGS grant to improve a WC footpath access

**5. Project title?**

Kissing Gate for Fittleton Footpath 3

**6. Project summary:**

The kissing gate in situ is too small. A new metal kissing gate which is strong enough to contain cattle is needed.

**7. Which Area Board are you applying to?**

Tidworth

**Electoral Division**

The Collingbournes and Netheravon

**8. What is the Post Code of where the project is taking place?**

SP4 9PY

**9. Please tell us which theme(s) your project supports:**

Children & Young People  
Countryside, environment and nature  
Health, lifestyle and wellbeing  
Safer communities  
Sport, play and recreation

If Other (please specify)

**10. Finance:**

**10a. Your Organisation's Finance:**

**Your latest accounts:**

03/2017

**Total Income:**

£4600.00

**Total Expenditure:**

£4300.00

**Surplus/Deficit for the year:**

£300.00

**Free reserves currently held:**

**(money not committed to other projects/operating costs)**

£2000.00

**Why can't you fund this project from your reserves:**

It is a Wiltshire Council right of way and the Parish Council would like to take advantage of the PIGS grant scheme

We are a small community group and do not have annual accounts or it is our first year:

**10b. Project Finance:**

Total Project cost		£500.00		
Total required from Area Board		£500.00		
Expenditure (Itemised expenditure)	£		Income (Itemised income)	Tick if income confirmed
Kissing gate	300.00			£
Installation	200.00			
Total	<b>£500</b>			<b>£0</b>

**11. Have you or do you intend to apply for a grant from another area board within this financial year?**

No

**12. If so, which Area Boards?**

Tidworth

**13. Please tell us WHO will benefit and HOW they will benefit from your project benefit your local community?**

All residents of Fittleton and Haxton plus surrounding villages who regularly use the footpath for walking dogs and exercise

**14. How will you monitor this?**

The farmer will let us know how it is being used as he can see the footpath from his farmhouse

**15. If your project will continue after the Wiltshire Council funding runs out, how will you continue to fund it?**

This is a one off project and the kissing gate should last for years without an money being spent on it.

**16. Is there anything else you think we should know about the project?**

17. DECLARATION

**Supporting information - Please confirm that the following documents will be available to inspect upon request:**

**Quotes:**

yes I will make available on request 1 quote for individual project costs over £500 & 2 quotes for project costs over £1000 (Individual project costs are listed in the expenditure section above)



**Accounts:**

yes I will make available on request the organisation's **latest accounts**

**Constitution:**

yes I will make available on request the organisation's Constitution/Terms of Reference etc.

**Policies and procedures:**

yes I will make available on request the necessary and relevant policies and procedures such as Child Protection, Safeguarding Adults, Public Liability Insurance, Access audit, Health & Safety and Environmental assessments.

**Other supporting information (Tick where appropriate, for some project these will not be applicable):**

yes I will make available on request any other form of licence or approval for this project has been received prior to submission of this grant application.

**And finally...**

yes The information on this form is correct, that any award received will be spent on the activities specified.

---

---

---



## Area Board Projects and Councillor Led Initiatives Application Form 2017/2018

**To be completed by the Wiltshire Councillor leading on the project**

Please ensure that you have read the Funding Criteria before completing this form

**PLEASE COMPLETE ALL SECTIONS TO ENSURE THAT YOUR APPLICATION CAN BE CONSIDERED**

**1. Contact Details**

<b>Area Board Name</b>	Tidworth		
<b>Your Name</b>	Mark Connolly		
<b>Contact number</b>	01980 847332 0792 5342946	<b>e-mail</b>	Mark.Connolly@wiltshire.gov.uk

**2. The project**

<b>Project Title/Name</b>	Armed Forces Day 2018		
<b>Please tell us about the project /activity you want to organise/deliver and why?</b>  <i>Important: This section is limited to 900 characters only (inclusive of spaces).</i>	<p>A free public event to celebrate the Armed Forces. The event is to be held on June 30<sup>th</sup> 2018, located on the Lucknow Rugby field A338. It is proposed to have 100 vendors/stall holders with a central arena with events throughout the day.</p> <p>The event will have first aid, security and PA system to ensure public safety. Public liability insurance plus field reinstatement works will have to be funded. It is the intention of the committee to supply free gifts, face painting, flags and souvenirs for visiting public.</p>		
<b>Where is this project taking place?</b>	Tidworth Lucknow Rugby Fields A338		
<b>When will the project take place?</b>	30 June 2018		
<b>What evidence is there that this project/activity needs to take place/be funded by the area board?</b>	Tidworth is the largest Military Garrison town in the UK, this will be the first event of its kind held in Tidworth.		

How will the local community benefit?			
Does this project link to the Community Plan or local priorities? (if so, please provide details)	Yes, at the Out Community Matters Event in November 2016, the community voted improving 'Involvement in Community Events' and increasing 'Affordable Access to Cultural Activities' as the top priorities in the 'Culture' theme. This project will help deliver those priorities.		
Is this project supported by the Local Youth Network or Community Area Transport Group?	n/a		
What is the desired outcome/s of this project?	To improve military & civilian integration, by providing an opportunity to celebrate Armed Forces Day as a major community event.		
Who will be responsible for managing this project?	Eddie Stead Committee Chairman		
<b>3. Funding</b>			
What will be the total cost of the project?	Unknown at present however projected for £7000		
How much funding are you applying for? Please note that only capital funding is available	£2700		
If you are expecting to receive any other funding for your project, please give details	<b>Source of Funding</b>	<b>Amount Applied For</b>	<b>Amount Received</b>
	n/a		
	n/a		
Please give the name of the organisation and bank account name (but not the number) your grant will be paid in to.	n/a		
<b>4. Declaration – I confirm that...</b>			
<input checked="" type="checkbox"/> The information on this form is correct and that any grant received will be spent on the activities specified			
<input checked="" type="checkbox"/> Any form of licence, insurance or other approval for this project will be in place before the start of the project outlined in this application			
Name: Mark Connolly			Date: 06/12/17
Position in organisation: Wiltshire Councillor – Tidworth			
Please return your completed application to the appropriate Area Board Locality Team ( <a href="#">see section 3</a> )			

## Area Board Projects and Councillor Led Initiatives Application Form 2017/2018

**To be completed by the Wiltshire Councillor leading on the project**

Please ensure that you have read the Funding Criteria before completing this form

**PLEASE COMPLETE ALL SECTIONS TO ENSURE THAT YOUR APPLICATION CAN BE CONSIDERED**

<b>1. Contact Details</b>	
<b>Area Board Name</b>	Tidworth
<b>Your Name</b>	Chris Williams
<b>Contact number</b>	<b>e-mail</b> Christopher.williams@wiltshire.gov.uk
<b>2. The project</b>	
<b>Project Title/Name</b>	Tidworth Community Area Healthy Schools Project
<b>Please tell us about the project /activity you want to organise/deliver and why?</b>  <i>Important: This section is limited to 900 characters only (inclusive of spaces).</i>	<p>Tidworth Area Board was pleased to be able to support five of our local schools achieve the Healthy Schools Bronze accreditation over the past 12 months and would like to offer all seven of our local schools the opportunity to start/continue their Healthy School journey.</p> <p>Data presented to the Area Board by Public Health highlighted that 25.5% of children in Reception Year are obese/ overweight compared to the Wiltshire average of 21.2% and Year 6, 33% are obese/ overweight compared to the Wiltshire average of 29.6%. The most efficient and effective way of tackling this issue is through working with the schools directly.</p> <p>The Healthy Schools programme actively promotes learning and healthy lifestyle choices for children and supports the schools capacity to deliver effective and sustainable interventions for all children</p>
<b>Where is this project taking place?</b>	Tidworth Community Area
<b>When will the project take place?</b>	2018
<b>What evidence is there that this project/activity needs to take place/be funded by the area board?</b>	Evidence presented to the Area Board by Public Health showing an issue with obesity/ overweight children in the Tidworth Community Area.



<b>How will the local community benefit?</b>	Working with all the schools within our community area will provide the most effective way of engaging with local young people. Children will benefit from the practices that each school brings in through the healthy schools programme.  The project would support the schools to work collaboratively with the Area Board and each other creating long-term sustainable relationships that can be utilised for future collaborative working.		
<b>Does this project link to the Community Plan or local priorities?</b> (if so, please provide details)	Yes, improving the health & wellbeing of young people in our community area was voted as a priority at the Our Community Matters event.		
<b>Is this project supported by the Local Youth Network or Community Area Transport Group?</b>	n/a		
<b>What is the desired outcome/s of this project?</b> T For all Tidworth Community Area schools to be engaged with the Healthy Schools programme and for the health and wellbeing of young people in our community area to improve.			
<b>Who will be responsible for managing this project?</b> Marc Read, Community Engagement Manager			
<b>3. Funding</b>			
<b>What will be the total cost of the project?</b>	£2340.00		
<b>How much funding are you applying for?</b> Please note that only capital funding is available	£2340.00		
<b>If you are expecting to receive any other funding for your project, please give details</b>	<b>Source of Funding</b>	<b>Amount Applied For</b>	<b>Amount Received</b>
	n/a		
	n/a		
<b>Please give the name of the organisation and bank account name (but not the number) your grant will be paid in to.</b>	n/a		
<b>4. Declaration – I confirm that...</b>			
<input checked="" type="checkbox"/> The information on this form is correct and that any grant received will be spent on the activities specified			
<input checked="" type="checkbox"/> Any form of licence, insurance or other approval for this project will be in place before the start of the project outlined in this application			
Name: Chris Williams			Date: 29/11/2017
Position in organisation: Wiltshire Councillor – Ludgershall & Perham Down			
Please return your completed application to the appropriate Area Board Locality Team ( <a href="#">see section 3</a> )			

**Report to** Tidworth Area Board  
**Date of meeting** 22<sup>nd</sup> January 2018  
**Title of report** Youth Grant Funding

**Purpose of the Report:**

To consider the applications for funding listed below together with the recommendations of the Local Youth Network (LYN) Management Group.

Applicant	Amount requested	LYN Management Group recommendation
T2a	£905.00	Accept
Any Body Can Cook	£1503.24	Accept
Salisbury Playhouse	£5000.00	Accept
Wellington Academy DofE	£1200.00	Accept

**1. Background**

The recommendation from the LYN Management Group has been made in accordance with the following guidelines:

- Leaders guidance for Community Area Boards on Positive Activities for Young People
- Positive Activities for Young People local Youth Network Terms of Reference
- Positive Activities Toolkit for Community Area Boards

Young people have considered this application and identified it as a priority for Area Board funding.

**2. Main Considerations**

- 2.1. Councillors will need to be satisfied that Youth Grant Funding awarded in the 2016/2017 year are made to projects that can realistically proceed within a year of it being awarded.
- 2.2. Councillors will need to decide and be assured that young people and the community will benefit from the funding being awarded and the project/positive activity proceeding. The application should meet the identified needs, priorities and outcomes for young people in the areas, as identified in the LYN Needs Assessment and Strategic Plan.
- 2.3. Councillors will need to ensure measures have been taken in relation to safeguarding children and young people.
- 2.4. Councillors will need to ensure that young people have been central to each stage of this Youth Grant Funding application.

**3. Environmental & Community Implications**

Youth Grant Funding will contribute to the continuance and/or improvement of cultural, social and community activity and wellbeing in the community area, the extent of which will be dependent upon the individual project.

**4. Financial Implications**

Financial provision had been made to cover this expenditure

- 4.1. Tidworth Area Board was allocated £14,070 (including rollover from previous year)
- 4.2. The Tidworth Area Board Youth Funding balance for 2016/17 is £12,455.00
- 4.3. All decisions must fall within the Youth Funding allocated to Tidworth Area Board.
- 4.4 If funding is awarded in line with the LYN recommendations outlined in this report Tidworth Area Board will have a Youth Funding balance of £5,461.76

**1. Legal Implications**

There are no specific legal implications related to this report.

**2. Human Resources Implications**

There are no specific human resources implications related to this report.

**3. Equality and Inclusion Implications**

Ensuring that Community Area Boards and LYNs fully consider the equality impacts of their decisions in designing local positive activities for young people is essential to meeting the Council’s Public Sector Equality Duty.

**4. Safeguarding Implications**

The Area Board has ensured that the necessary policies and procedures are in place to safeguard children and young people. The Community Youth Officer has assessed this application agreed it meets safeguarding requirements.

**5. Applications for consideration**

Application ID	Applicant	Project Proposal	Requested
ID 2598	T2a	Family Learning Pottery	£905.00
<b>Project description</b>			
After the very successful Family Learning Festival in October half term I would like to continue to have some community pottery sessions as the sessions offered were very popular and places taken up within a few days of advertising. Many people therefore were unable to have a go and have asked me to try and organise some more sessions. The Salisbury arts Centre has put together 3 Tidworth Pottery Project Proposal sessions for 70 people for February half term and Easter holidays 2018			
<b>Recommendation of the Local Youth Network Management Group</b>			
That the application meets the grant criteria and is approved for the amount of £905.00			
Application ID	Applicant	Project Proposal	Requested
ID 526	Any Body Can Cook	Any Body Can Cook Netheravon	£1503.2

### **Project description**

A project for young people supporting their development of practical cookery skills to support them in their transition into independent living and potential skills for employment.

The application has arisen following the popularity of a free family learning session we ran at Netheravon village hall as part of Tidworth's family learning week. The project supports the JSA priorities of addressing child poverty and childhood obesity promoting healthy lifestyles through the opportunities to prepare and cook simple nutritious and economic meals. From the sessions there are possible progression routes that could be accessed and we can support young people to do so. Historically Any Body Can Cook has a number of learners who have progressed onto both further accredited courses and work in the catering industry. Increase employment opportunities and youth activities through the social nature of the sessions new networks may develop and self confidence and other softer skills increase which support participants when accessing employment and other activities. The sessions also support young people to connect with their communities enabling them to belong and contribute to society - through engagement with peers and other agencies who can offer opportunities or support. - To provide opportunities for young people to take part in a range of activities where they can socialise safely with their peers and develop relationships including with adults they can trust - through the provision of a safe environment where everyone is valued and respected. - Encourage young peoples personal and social development - through the acquisition of essential transferable life skills and sharing food they have cooked together. - Improve young peoples physical and mental health and emotional well-being - through the development of new skills by participating in a positive activity in a safe and stimulating environment learning how to cook and eat healthily and the development of friendships and support networks within the group. - Help young people to achieve in education work or training - through the development of new skills. - Prevent and divert young people away from risky behaviours e.g. teenage pregnancy substance misuse and involvement in crime and anti-social behaviour - through partnership support and signposting as well. We would anticipate working with approximately 50 young people the youth group has over 100 on its books so we will ensure all that wish to participate have the opportunity over a series of 12 monthly sessions. The project will be accessible as we will be using the existing youth club venue that are convenient to get to and has access for all. The sessions will be affordable as they will be free to attend. The content will be flexible and the young people who engage will have some ability to negotiate content in order that it meets their individual needs and therefore empower them to actually use what they have learned. The project can accommodate those with additional learning or physical/medical needs as the facilitator ABC Cook has a variety of equipment and strategies to support every learners individual requirements. Evidence and examples can be provided on request. Any special dietary requirements can also be catered for within sessions. Any Body Can Cook already has a large partnership base which will be accessed if appropriate to support delivery.

### **Recommendation of the Local Youth Network Management Group**

That the application meets the grant criteria and is approved for the amount of £1503.24

<b>Application ID</b>	<b>Applicant</b>	<b>Project Proposal</b>	<b>Requested</b>
ID 525	Salisbury Playhouse	Stage 65	£5000.00

### **Project description**

In Autumn 2016 Salisbury Playhouse created a three year programme of activity entitled Salisbury Plain Project which will see our Stage 65 Youth Theatre expand its reach across

Salisbury Plain. Working with hubs at secondary schools across the area which lack professional drama support we will engage young people in creating high quality theatre performances increasing access to the arts for young people who face rural isolation. Our parallel aim is that the project will enable greater community cohesion especially for young families across this heavily militarised area and in response to the dramatic increase in returning military personnel.

Salisbury Playhouse is seeking funding to continue our Stage 65 Youth Theatre sessions at Wellington Academy in Tidworth bringing theatre activity to young people and their families in this rural military community. Workshops are led by our Community Youth Theatre Practitioner.

In summer 2018 we hope to create a performance exploring the history of World War One, engaging a leading UK theatre company to collaborate with the young people on devising this outdoor performance which will be shared with family and friends. We also provide subsidised tickets for participants throughout the year for Salisbury Playhouse Productions to engage young people and their families in additional theatre activities. This feeds into our ambition for greater audience development for theatre work of a more diverse nature. Our project addresses the rural isolation facing Wiltshires young people particularly at secondary school age. By forming educational hubs at schools and taking sessions to the community we are removing the common rural barriers of travelling costs. Young people who are not ordinarily able to attend Salisbury Playhouse for Youth Theatre sessions or even to see productions will benefit from equal opportunities. This ensures access for young people to the creative and technical knowledge of professional practitioners helping them to develop drama skills and build confidence motivational and social skills. This increases their educational achievements and consequent employability creating a long term impact on their future - especially important for those who attend schools which currently lack professional drama support and expertise. Rural isolation is particularly intensified in this area by the strong military presence on Salisbury Plain.

Our project will therefore also address the need to support military civilian integration across the Salisbury Plain area specifically for young families through engagement in the arts and culture. With the development of Britains first Super Garrison on Salisbury Plain Wiltshires military presence is dramatically increasing. By 2020 one third of Britains military will be based in Wiltshire. By bringing theatre directly into the community we will create opportunities for both military and civilian families and encourage integration. We aim to create stronger community cohesion throughout this extensively rural area prioritising young people from marginalised groups both military and civilian. We will help to build a sense of community and integration between both civilian and military families on Salisbury Plain as many military personnel and their families are new to the area and civilian families need and want to integrate into these new communities. Military civilian integration has been prioritised by Wiltshire Council as one of the strategic aims of this major development. Consequently Salisbury Playhouse has identified the need to develop relationships with the regions military community as a priority. We have already seen success through our existing work with Wellington Academy which has an approximately 55% military family presence among its students. Stage 65 Tidworth engages over 30 local young people in high quality theatre activity. Our ambition is to see increased levels of engagement throughout the three years in 2018. Participants have created and devised work which they have shared with and performed to over 200 family members and community audiences as well as our Salisbury Playhouse audiences. Again we hope to see this increase further as the project develops. Our project has enabled those who have almost no access to cultural infrastructure to experience and take part in the arts. Using the school as a base for youth theatre sessions has enabled us to engage those local young families most in need and feedback from participants has shown a great propensity for our work. We provide leaflets for circulation as well as other advertising means throughout the local area and onsite at our theatre. We also promote free taster workshops to engage prospective participants. However we find communicating information about the project directly through our partner schools and networks within the military community is the most effective way to reach

beneficiaries. We work closely with our partner schools to refer students to the project. This ensures our project is inclusive and that we are reaching those who are most in need e.g. those from a military family or suffering from rural isolation or socio-economic inequality we can also guarantee that bursaries are appropriately allocated. We work closely with contacts and networks within the military community as well for example HQ South West and the Army Welfare Service who refer young people and their families to the project from outside the school environment. standard of quality through-out the sector and set an aspiration for other organisations to follow Wiltshires example in presenting high quality artistic experiences for a diverse range of young people and the UKs

Our ambition is for core activity to become self-sustaining through an ongoing commitment from Salisbury Playhouse and our experienced Take Part team. Although any additional work with external practitioners will only be possible with additional funding the main aim and legacy of this project is to establish a specialised programme of outreach work and build a cultural infrastructure to benefit the Salisbury Plain community support military civilian integration and those young people most in need.

**Recommendation of the Local Youth Network Management Group**

That the application meets the grant criteria and is approved for the amount of £5000.00

Application ID	Applicant	Project Proposal	Requested
ID 507	Wellington Academy CCF	DofE Club	£1200.00

**Project description**

With the loss of the Wiltshire Council DofE licence the Academy has become a Directly Licensed Centre. From April 2018 this will entail the payment of £1200 license fee. Funding is requested to help pay for the license to keep DofE affordable for local students.

The DofE programme offers between 30-40 of our students an amazing opportunity to widen their education and experience to include outdoor expeditions community volunteering engagement in sport and the learning of a new skill. This all takes place in the Tidworth area and encourages young people to develop a much wider and deeper relationship with their local community. We have engaged with the Community Engagement Manager to identify opportunities for volunteering and community involvement by our young people. Currently we charge 20 for registration and 10-15 for each expedition and we offer subsidies for FSM students Service Children and others in financial difficulty. The DofE programme is delivered voluntarily by Academy members of staff. Without financial support for the cost of the DofE License the cost of DofE would have to rise to about 100 - 150 which would be unaffordable to the majority of our students.

**Recommendation of the Local Youth Network Management Group**

That the application meets the grant criteria and is approved for the amount of £1200.00

No unpublished documents have been relied upon in the preparation of this report

**Report Author** Name, Marc Read – Community Engagement Manager  
Email: marc.read@wiltshire.gov.uk





**Report to** Tidworth Area Board  
**Date of meeting** 14<sup>th</sup> November 2016  
**Title of report** Youth Funding Procurement of PAYP providers

**Purpose of the Report:**

To consider the listed procurement purchases of positive activity providers; using youth funding, as detailed below, together with the recommendations of the Local Youth Network (LYN) Management Group.

PAYP Provider	Amount requested	LYN Management Group recommendation
Fred Fieber	£2800	Accept

**1. Background**

The recommendations from the LYN Management Group has been made in accordance with the following guidelines:

- Leaders guidance for Community Area Boards on Positive Activities for Young People
- Positive Activities for Young People local Youth Network Terms of Reference
- Positive Activities Toolkit for Community Area Boards
- Procurement Policies and Guidelines <http://thewire.wiltshire.council/index/service-areas-carolyn-godfrey/business-services-procurement/procurement-policies-and-guidance.htm>

Young people have considered these and identified them as a priority for Area Board funding.

**2. Main Considerations**

- 2.1. Councillors will need to be satisfied that Youth Funding awarded in the 2016/2017 year are made to projects that can realistically proceed within a year of it being awarded.
- 2.2. Councillors will need to decide and be assured that young people and the community will benefit from the funding being awarded and the project/positive activity proceeding. The application should meet the identified needs, priorities and outcomes for young people in the areas, as identified in the LYN Needs Assessment and Strategic Plan.
- 2.3. Councillors will need to ensure measures have been taken in relation to safeguarding children and young people.
- 2.4. Councillors will need to ensure that young people have been central to each stage of this Youth Funding procurement process, through the Local Youth Network Management Group.
- 2.5. Councillors will need to be satisfied that procurement policies and guidelines have been adhered to.

**3. Environmental & Community Implications**

Youth Funding will contribute to the continuance and/or improvement of cultural, social and community activity and wellbeing in the community area, the extent of which will be dependent upon the individual project.

**4. Financial Implications**

Financial provision had been made to cover this expenditure.

**5. Legal Implications**

There are no specific legal implications related to this report.

**6. Human Resources Implications**

There are no specific human resources implications related to this report.

**7. Equality and Inclusion Implications**

Ensuring that Community Area Boards and LYNs fully consider the equality impacts of their decisions in designing local positive activities for young people is essential to meeting the Council’s Public Sector Equality Duty.

**8. Safeguarding Implications**

Wiltshire Council has ensured that the necessary policies and procedures are in place; through its’ procurement process, to safeguard children and young people. However, the Area Board needs to be satisfied that the providers being procured have everything necessary in place. The Community Youth Officer has assessed this and agreed providers meet safeguarding requirements.

**9. Procurement of PAYP for consideration**

<b>Procurement purchase ID</b>	<b>Provider</b>	<b>Project Proposal</b>	<b>Requested</b>
Procurement purchase ID number	Fred Fieber	Activities	£2800
<b>Provider (details of the PAYP provider)</b>			
Fred Fieber			
<b>Positive activity description</b>			
For young people to work with artist Fred Fieber to design & paint the ‘Queens Wall’ in Tidworth. The project will see up to 150 students work on the project, with support from Wellington Academy staff.			
<b>Explanation why chosen this supplier</b>			
This provider has been selected because of his experience of working with young people and on this type of project. Over the past couple of years Fred has worked with Splash Wiltshire and on the Milford Street Project.			
<b>Recommendation of the Local Youth Network Management Group, with any conditions</b>			
That this procurement purchase of a PAYP meets the youth funding criteria, meets the needs of young people identified in the recent needs assessment, relates directly to the JSA and is approved for the amount of £2800.			

Background documents used in the publication of this report:

- Fred Fieber Quote

**Report Author**

Name, Marc Read – Community Engagement Manager  
Email: marc.read@wiltshire.gov.uk





**fredfieber**

illustration/graphics

65 Rampart Road

Salisbury Wilts SP1 2LU

tel/fax: **01722 414828**

**fred.fieber@btconnect.com**

Marc Read  
Community Engagement Manager – Tidworth Community Area  
Wiltshire Council  
Council House  
Bourne Hill  
Salisbury  
Wiltshire

**Date: 20.11.2017**

**Estimate for initial ideas workshop, design and painting of The Queen's Wall in Tidworth**

**My daily rate will be £200 per day**

<b>X1 day ideas workshop in Wellington Academy.</b>	<b>£200</b>
<b>X2 days final design work</b>	<b>£400</b>
<b>X1 day preparation of the wall undercoating etc.</b>	<b>£200</b>
<b>X5 days final painting</b>	<b>£1000</b>
<b>X1/2 day for protective coat</b>	<b>£100</b>
<b>Materials</b>	<b>£500</b>
<b>1 lift Scaffold hire</b>	<b>£400</b>

---

**Total £2800**

---





January 2018

#### Overview

NHS Wiltshire Clinical Commissioning Group (CCG) is responsible for commissioning a broad range of healthcare for the population of Wiltshire. We are led by experienced local GPs drawn from across the county, who provide clear clinical leadership to the big decisions affecting the future of healthcare provision in Wiltshire, carefully tailored to meet the differing needs of people locally.

Our vision is to ensure the provision of a health service which is high quality, effective, clinically-led and local. We are committed to delivering healthcare that meets the needs of Wiltshire people, to consult and engage with our population to enable them to be involved in decisions made about health services and to deliver those services to people in their own homes or as close to home as possible.

**The right healthcare, for you, with you, near you**

#### News from the CCG!

#### Winter Pressures guidance issued from NHS National Emergency Pressure Panel

NHS England has issued guidance in line with the new Winter Pressures Protocol. The guidance, which is issued to hospitals, extends the deferral of all non-urgent inpatient elective care to free up capacity for the sickest patients to January 31. The panel reiterated that cancer operations and time-critical procedures should go ahead as planned. Over and above this, day-case producers and routine outpatient appointments should also be deferred where this will release clinical time for non-elective care.

For more information read the [official letter from Pauline Phillip](#), National Director, Urgent and Emergency Care, NHS England and NHS Improvement to systems, and the [press statement](#) from the National Pressure Panel.

#### Out of hours service for children in South Wiltshire

An out of hours GP service for children aged 0 – 10 years in Salisbury and South Wiltshire means parents can now book a same day appointment to see a GP at the Salisbury Walk in Health Centre.

This extended service will provide out of hours GP health advice and treatment for minor illnesses and injuries from Monday to Friday between 6.30pm – 10pm, and will provide partners with a local alternative to A&E when their child is ill.



Parents should ring NHS 111 to access the service. If necessary, the call handler will then advise parents to contact the Salisbury Walk in Health Centre to make a same day appointment.

### Urgent GP appointments – where would you go?

If you need a same day urgent GP appointment – this could mean that you might not be able to see your usual GP and you may have to travel to a different practice.

Urgent GP appointments are booked on the day and are for patients who have health problems which cannot wait for a routine appointment.

We want to hear your views on accessing urgent GP appointments.

Tell us what you think by completing this [short survey](#).



### Have your say on the organ donor 'opt out' consultation

People who donate their organs and tissue after they die help save thousands of lives in England each year. However, 3 people die a day due to lack of suitable organs. Under current rules, a person who has died can only be an organ donor if they have agreed to it when they were alive.



If the law changes, people will be considered to be an organ donor unless they have opted out. This would increase the number of organs donated and save more money.

The Department of Health's 'opt out' [consultation](#) is now live – take a few minutes to share your views on the proposed new rules.

## Campaign – stay well this winter

Winter can be seriously bad for our health, especially for people aged 65 or older and people with long term conditions.

The cold and damp weather, ice, snow and high winds can all aggravate any existing health problems and make us more vulnerable to illnesses that are more common in winter.

We have put together some handy information to help you stay well this winter.

**Stay well this winter  
and have the flu jab**



## Have you had your flu vaccination?

Flu strikes in winter and can be far more serious than you think – it can lead to serious complications such as bronchitis and pneumonia and in some instances it can be deadly.

That's why it's important that people who are at increased risk from flu, have their free flu vaccination.

If you are:

- Pregnant
- Aged 65 or over
- Have a long term health condition
- Living in a residential care home
- A carer
- Living with someone who is immunocompromised
- Are a frontline health or social care worker

This year more children are being vaccinated, and children over 6 months old with a long term health condition, and children aged two and three are offered the vaccination in general practice.

Children in reception class and school years 1, 2 3 & 4 will be offered the vaccine at school.

If you're eligible for a free flu vaccination and not yet had it, speak to your surgery and make an appointment today!

### Get advice from your pharmacist

Winter can make existing health problems worse, so if you feel you are coming down with something, even if it's just a cough or cold, don't wait until it gets worse – act quickly and get advice from a pharmacist.

Pharmacists are fully qualified to advise you on the best course of action when you start to feel unwell, and this can be the best and quickest way to help you recover and feel healthy.



Most pharmacies now have a private consultation area, so you can discuss your health issues in confidence and you don't need to make an appointment.

### Is your medicine cabinet fit for the winter?

Be prepared for common ailments by keeping a well stocked medicine cabinet at home.

#### What to keep in your medicine cabinet

<b>Painkillers</b>  Aspirin, paracetamol and ibuprofen are highly effective at relieving most minor aches and pains.	<b>Antihistamines</b>  Useful for dealing with allergies, insect bites and hay fever.
<b>Oral rehydration salts</b>  Oral rehydration salts can help restore your body's natural balance of minerals and fluid lost through diarrhoea, fever, and vomiting - if you can't continue your normal diet.	<b>Indigestion treatment</b>  If you have stomach ache, heartburn or trapped wind, a simple antacid will reduce stomach acidity and bring relief.
<b>Anti-diarrhoea tablets</b>  It's a good idea to keep anti-diarrhoea medicine at home as diarrhoea can happen without warning. Causes include food poisoning and a stomach virus.	<b>Suncream</b>  Keep a suncream of at least factor 15, with UVA protection. Exposure to the sun can cause sunburn and increase your risk of skin cancer.

Always keep medicines out of the reach



## Celebrations as Healthwatch Wiltshire gets national recognition



(from left) Volunteers Mick and Marilyn Stowe with Stacey Plumb and Lucie Woodruff from Healthwatch Wiltshire

Volunteers and staff at Healthwatch Wiltshire are celebrating after being recognised by a prestigious national award for its excellent volunteering programme.

The Investing in Volunteers accreditation - the UK quality standard for good practice in volunteer management - has been awarded to Healthwatch Wiltshire, which has more than 60 volunteers on its books.

A celebration event was held at Melksham Football Club to thank all the volunteers for giving their time to gathering feedback on local health and care services over the last year. And a special cake was made to celebrate the achievement.

Stacey Plumb, Volunteer Officer at Healthwatch Wiltshire, said: "We're thrilled to be recognised with this quality standard! Investing in Volunteers aims to improve the quality of the volunteering experience and for organisations to acknowledge the enormous contribution made by these dedicated volunteers."

The Investing in Volunteers award is the gold standard for organisations who work with volunteers. Assessors from Investing in Volunteers visited the offices in Melksham to chat to volunteers and staff, and see its work in action. Healthwatch Wiltshire was assessed against a range of best practice standards and proved to excel in all aspects of working with its volunteers.

Helen Davies from Malmesbury, who has been a volunteer with Healthwatch Wiltshire for 18 months, said: "As a Healthwatch volunteer I have been involved in numerous projects, engaging with the public to get their views regarding the NHS.

"The Investing in Volunteers award that Healthwatch Wiltshire has recently received reflects the standards that are expected of us, as volunteers and the standards we can expect from the team. Volunteering with Healthwatch is a two way process which gives us the feeling of being valued, well trained and ultimately making a professional difference to the organisations we represent."

Investing in Volunteers is managed by the UK Volunteering Forum and delivered by NCVO, Volunteer Scotland, Volunteer Now in Northern Ireland and Wales Council for Voluntary Action. Further information about the award, which will last for three years, can be found on [iiv.investinginvolunteers.org.uk](http://iiv.investinginvolunteers.org.uk).

Or to find out more about volunteering with Healthwatch Wiltshire visit: [healthwatchwiltshire.co.uk/volunteering](http://healthwatchwiltshire.co.uk/volunteering).



### Contact us:

Tel 01225 434218

[info@healthwatchwiltshire.co.uk](mailto:info@healthwatchwiltshire.co.uk)

[healthwatchwiltshire.co.uk](http://healthwatchwiltshire.co.uk)

Healthwatch Wiltshire is a local independent organisation which exists to speak up for people on health and care. If you have used a service recently then we would like to hear from you. We use what people tell us when we meet with the commissioners and providers of services to make sure that they take account of your views and experiences.

